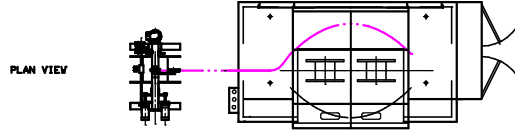
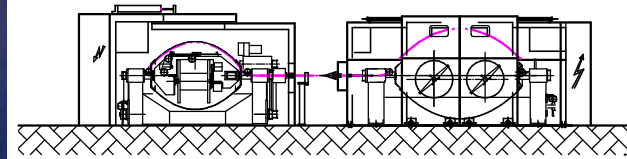


TAKE-UP Ø800 TWINNING MACHINE 2x600 : BIND 600



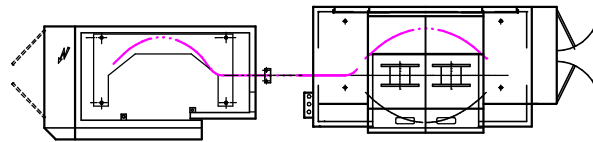
TWINNING MACHINE: BIND 600 (2400/5000 TWIST)

TWINNING MACHINE WITH EXTERNAL TAKE-UP



FRONT VIEW

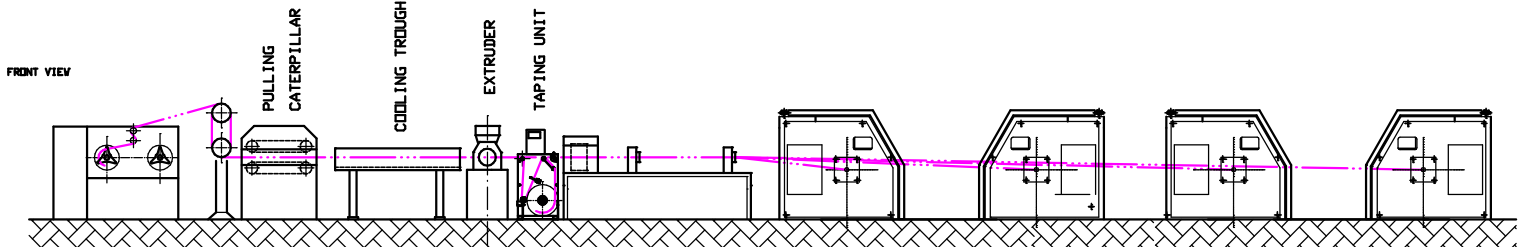
DOUBLE TWIST STRANDING Ø800 : DTE 800 TWINNING MACHINE 2x600 : BIND 600



PLAN VIEW

QUADRUPLE TWIST LINE

DOUBLE TWIST STRANDING : DTE 800 (4000 TWISTS) = A
 TWINNING MACHINE: BIND 600 (2400/5000 TWISTS) = B
 MAX TOTAL TWISTS A+B = 9000



FRONT VIEW

PULLING CATERPILLAR

COOLING TROUGH

EXTRUDER

TAPING UNIT

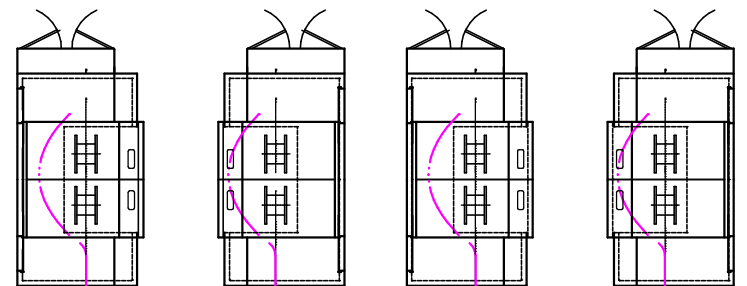
S-Z LAYING-UP MACHINE

N° 4 TWINNING MACHINE 2x600 : BIND 600

WINDING MACHINE



PLAN VIEW



LAN CABLES PRODUCTION LINE

TWINNING MACHINE: BIND 600 (2400/5000 TWIST)
 MIN. INVERSION TIME S-Z MACHINE: 200 ms